

### **Grading:**

Your grade will consist of both SL and HL projects, assignments, quizzes, and tests.

You should be monitoring your grade online all year round.

**First semester grades are weighted according to the following:**

- Summative Assessments = 45%
- Formative Assessments = 30%
- Guided Practice = 10%
- Independent Practice = 15%

**Your IA will take the place of your final exam in the second semester.**

The grading scale is as follows:

100 – 90%	A
89 – 80%	B
79 – 70%	C
69 – 60%	D
59 – 0%	F

Glue this side down into  
your notebook

I do NOT round up at the end of the semester so do not ask! Even if you have an 89.99%

Read: \_\_\_\_\_

### **Tardy Policy:**

1<sup>st</sup> Tardy = warning

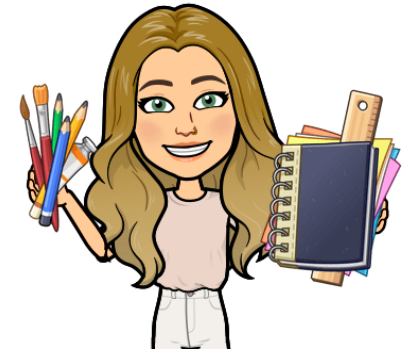
2<sup>nd</sup> Tardy = warning & parent contact

3<sup>rd</sup> Tardy = 30 minute detention

4<sup>th</sup> Tardy = 1 hour detention

5<sup>th</sup> Tardy = referral

## IB Math Analysis & Approaches Year 2 HL



## Classroom Policies and Expectations

Saddleback High School  
2025 – 2026

### **Contact Information**

Macy Reagan

Room 136

[Macy.Reagan@sausd.us](mailto:Macy.Reagan@sausd.us)

[Macy.Reagan@sausdlearns.net](mailto:Macy.Reagan@sausdlearns.net)

### **Progressive Discipline Plan:**

Behavior should never be an issue. We are all here to learn and we will all respect each other. Students who do not follow the rules will be subject to the following action(s):

- 1<sup>st</sup> minor offense: Student conference/detention
- 2<sup>nd</sup> minor offense: Parent phone call/conference
- 3<sup>rd</sup> offense: Referral

### **Materials Needed**

Students will come to class prepared DAILY with the following items:

- Chromebook
- Writing utensils: pencil, red pen, and black/blue pen
- **Composition Book** (College rule; 100 sheets)
- Current homework packet/syllabus
- Graphing display calculator (example TI-84)
- Highlighter (optional but very helpful!)

### **Description:**

IB Math SL is a 2-year course that is part of the IB Diploma Program. During Year 2 we will cover Probability, Statistics, Trigonometry, and Calculus. You will also be writing an Internal Assessment (IA) paper that consists of 12-20 pages on an exploration of a math topic of your choice.

**IB Exams:** At the end of Year 2 you will also sit for two end-of-course exams (External Assessments). The grade for IB (not your transcript grade) will be calculated with the following weights: Internal Assessment (20%), External Assessment Paper 1 (30%), External Assessment Paper 2 (30%), External Assessment Paper 3 (20%).

**Textbook:** Oxford IB Analysis & Approaches HL

**Academic Honesty:** Practice academic honesty! Plagiarism and cheating will not be tolerated. All work must be original and properly cited. Failure to adhere to academic integrity policies will be reported to administration as well as receiving a zero on the assignment.

### **Class Rules:**

- RESPECT is the rule!
- Students are expected to be polite and behave well. You will be treated as an adult as long as you act like one. Be respectful, polite, and courteous to me and to each other.
- **Profanity is not acceptable!**
- Personal grooming is not to be done during class time.
- Students are expected to be in their seats before the bell rings.
- Excessive tardies will result in detention, parent contact, and referrals
- Electronic devices are not to be used during class unless you have permission or I have said it is okay for the activity.

### **Homework:**

Homework is assigned daily to reinforce and practice the material covered in class. Consistent effort is critical—without regular practice, mastery of the content and success in the course are unlikely.

Students are responsible for making up any missed assignments due to absence. If the absence is excused, you will have two school days from the date of your return to submit the missed homework.

All homework is due by **Friday at 3:22 PM** each week to receive full credit. The only exception to this deadline is the date of the chapter exam, by which all related homework must be submitted. No homework from that chapter will be accepted after the exam has taken place.

### **Missing Exams**

If a student misses an exam, it must be taken on the day they return to class, unless the student has been absent for multiple consecutive days with excused absences. In such cases, alternate arrangements may be made at the teacher's discretion.